

Holiday Inn Ipswich - Orwell



[View the Access Guide](#)

The Havens, 2 Ransomes Europark, Ipswich, Suffolk IP3 9SJ

01473 272 244

www.ihg.com/holidayinn/hotels/gb/en/ipswich/ipwea/hoteldetail (<https://www.ihg.com/holidayinn/hotels/gb/en/ipswich/ipwea/hoteldetail>)

Guide Last Updated: 13/02/2018

[Something changed? \(/contact/something_changed?destination=/access-guide/kew-green/holiday-inn-ipswich-orwell\)](/contact/something_changed?destination=/access-guide/kew-green/holiday-inn-ipswich-orwell)



Google

(<https://maps.google.com/maps?ll=52.026566,1.209129&z=14&t=m&hl=en-US&q=US&mapclient=apiv3>)

Map data ©2018 Google

Access Guide



[Explain these icons \(/our-icons\)](/our-icons)

[Expand all](#) [Collapse all](#)

Hotel Introduction

[Collapse -](#)

Hotel Information

[Collapse -](#)

- The hotel has its own parking facilities.
- This hotel has its own restaurant located on the ground floor.
- Conference/meeting facilities are available.
- The conference/meeting facilities are located on the ground and first floors.

Room Information

[Collapse -](#)

- The hotel has 60 rooms in total.
- There is an/are accessible room(s) within the hotel.
- The accessible room(s) is/are located on the ground floor.
- The hotel has 2 accessible room(s) with accessible ensuite facilities.
- There is/are 2 accessible room(s) with a bath.
- There is not an/are not adjoining room(s) available for the accessible room(s).

- The accessible rooms are 15m - 18m from the hotel main entrance.
- There is a/are standard room(s) available on the ground floor.
- There is not an/are not adjoining room(s) available for the standard room(s).
- Rooms on other floors are accessed via stairs or lift.
- Bed raisers are not available on request.
- Bath mats are available on request.
- All televisions have subtitles available.
- Other auxiliary aids include; bath seats are available on requests.

Getting Here

Collapse -

By Road

Collapse -

- The hotel is located just off the A14, to the South East of Ipswich Town Centre.
- This hotel has a car park which is free for all users.

By Bus

Collapse -

- There is a bus stop within 150 metres of the hotel.
- There is a bus stop on The Havens which is within 150m of the hotel. The services which stop here are 76A and 77A.
- [For more information on Metro Travel please click here \(opens new tab\) \(http://www.localtransit.net/?title=Search+Ipswich+Bus+Routes&subtitle=Bus%252C+Train+or+Subway+Schedules&utm_source=adcenter&utm_medium=cpc&utm_term=ipswich%20\)](http://www.localtransit.net/?title=Search+Ipswich+Bus+Routes&subtitle=Bus%252C+Train+or+Subway+Schedules&utm_source=adcenter&utm_medium=cpc&utm_term=ipswich%20)

By Train

Collapse -

- The nearest Railway Station is Derby Road.
- Derby Road station is located to the south of the Town Centre and is approximately 2.4 miles from the hotel. There are several bus and taxi routes available from the station to the hotel.
- [For more information on National Rail please click here \(opens new tab\) \(http://www.nationalrail.co.uk/stations/DBR/details.html\).](http://www.nationalrail.co.uk/stations/DBR/details.html)

Getting Help and Assistance

Collapse -

- There is a member of staff available for help and assistance.
- Staff receive disability awareness/equality training.
- Staff do not receive deaf awareness training.
- There is not a member of staff trained in British Sign Language.
- British Sign Language interpreters cannot be provided on request.
- The alternative formats documents can be provided in include; large print on request.
- There is an assistance dog toilet or toileting area at the venue/near by.
- The assistance dog toilet or toileting area is located on the grass areas surrounding the hotel.
- Water bowls for assistance dogs are available.
- There are not mobility aids available.

Parking

Collapse -

Parking

Collapse -

- The hotel does have its own parking facilities.
- The car park is located at the front of the hotel.

- The car park type is open air/surface.
- The car park does not have a height restriction barrier.
- The car park does not have a barrier control system.
- The car park surface is tarmac and block paving.
- There is a/are Blue Badge parking bay(s) available.
- The Blue Badge bay(s) is/are clearly marked.
- There is/are 4 designated Blue Badge parking bay(s) within the car park.
- The dimensions of the designated Blue Badge parking bay(s) surveyed are 293cm x 480cm (9ft 7in x 15ft 9in).
- There is not a 120cm hatched zone around the Blue Badge parking bay(s).
- Parking spaces for Blue Badge holders do not need to be booked in advance.
- Clearly marked/signposted parent and child parking bays are not available.
- All parking spaces are provided on a first come first served basis.

Paying

Collapse -

- There are not parking charges for the car park.

Access from the Car Park

Collapse -

- The route from the car park to the entrance is accessible to a wheelchair user with assistance.
- Assistance may be required because there is/are uneven surfaces.
- The entrance is clearly visible from the car park.
- The surface on the approach to the entrance is tarmac and block paving.
- There is a road to cross between the car park and the entrance.
- There is no tactile paving on dropped kerbs between the car park and the entrance.
- The nearest designated Blue Badge parking bay is approximately 18m (19yd 2ft) from the main hotel entrance.

Drop-off Point(s)

Collapse -

- There is not a/are not clearly marked drop-off point(s).



1



2



3



4

Outside Access (Hotel Main Entrance)

Collapse -

Entrance

Collapse -

- This information is for the entrance located at the front of the hotel.
- The entrance area/door is clearly signed.
- There is ramped/sloped access at this entrance.
- There is a canopy or recess which provides weather protection at this entrance.
- The entrance door(s) does not/do not contrast visually with its immediate surroundings.
- The bell/buzzer is not in a suitable position to allow wheelchair users to gain access.
- The height of the bell/buzzer is 143cm (4ft 8in).
- The intercom is not in a suitable position to allow wheelchair users to gain access.
- The height of the intercom is 143cm (4ft 8in).

- The main door(s) open(s) towards you (pull).
- The door(s) is/are double width but one door is locked.
- The door(s) is/are heavy.
- The width of the door opening is 83cm.
- There is a small lip on the threshold of the entrance, with a height of 2cm or below.
- There is a second set of doors.
- The door(s) open(s) both ways.
- The door(s) is/are double width.
- The door(s) is/are heavy.
- The width of the door opening is 166cm.

Ramp/Slope

Collapse -

- The ramp/slope is located in front of the hotel.
- The gradient of the ramp/slope is slight.



1



2



3



4

Outside Access (Hotel Additional Entrance)

Collapse -

Entrance

Collapse -

- This information is for the entrance located at the front of the hotel, to the right as you face the hotel main entrance.
- The entrance area/door is clearly signed.
- There is ramped/sloped access at this entrance.
- There is a canopy or recess which provides weather protection at this entrance.
- The entrance door(s) does/do contrast visually with its immediate surroundings.
- The main door(s) open(s) towards you (pull).
- The door(s) is/are double width.
- The door(s) is/are heavy.
- The width of the door opening is 132cm.
- There is a small lip on the threshold of the entrance, with a height of 2cm or below.
- There is a second set of doors.
- The door(s) open(s) towards you (pull).
- The door(s) is/are double width.
- The door(s) is/are heavy.
- The width of the door opening is 132cm.

Ramp/Slope

Collapse -

- The ramp/slope is located in front of the entrance.
- The gradient of the ramp/slope is slight.



1



2



3



4

Reception

Collapse -

Reception

Collapse -

- The reception point is located ahead as you enter the hotel main entrance.
- The reception point is approximately 5m (5yd 1ft) from the hotel main entrance.
- The reception area/desk is clearly visible from the entrance.
- There is step-free access to the reception point.
- There is a clear unobstructed route to the reception point.
- There are windows, TVs, glazed screens or mirrors behind the reception point which could adversely affect the ability of someone to lip read.
- The reception counter is not placed in front of a background which is patterned.
- The lighting levels at the reception point are low.
- The height of the reception counter is high (110cm+).
- There is sufficient space to write or sign documents on the counter.
- There is a lowered section of the counter.
- The lowered section of the counter is at the recommended height of 76cm.
- There is sufficient space to write or sign documents on the lowered section of the counter.
- There is not a clear knee recess beneath the lowered section of the counter.
- The counter is staffed.
- There is not a bell to attract attention.
- The bell is at a suitable height for a wheelchair user.
- Clipboards can be provided to anyone who is unable to use the desk.
- There is not a hearing assistance system at the reception point.
- Signs and universally accepted symbols or pictograms, indicating lifts, stairs, WCs, circulation routes and other parts of the building are provided in the reception area.
- The type of flooring in the reception area is carpet.

Reception Waiting Area

Collapse -

- There is a waiting area close to the reception point.
- Access to the waiting area is unobstructed.
- There is a mixture of seating with and without armrests.
- There is sufficient space for a wheelchair user to use the waiting area.



1



2



3



4

Getting Around

Collapse -

Access

Collapse -

- There is step-free access throughout the majority of the building, via lift.
- There is/are 4 clearly marked step(s), with handrails on both sides, for access to Rooms 31-61 and the mini gym on the first floor.
- The height of the step(s) is/are between the recommended 15cm and 18cm.
- The going of the step(s) is/are not between the recommended 30cm and 45cm.
- The steps are shown in photograph 1.

Circulation

Collapse -

- There are doors in corridors/walkways which have to be opened manually.
- There are corridors/walkways with a surface width of less than 120cm (excluding any permanent obstructions over a small distance).
- The type of flooring in corridors/walkways is carpet.
- There is flooring in corridors/walkways which includes patterns or colours which could be confusing or look like steps or holes to some people.
- There is good colour contrast between the walls and floor in all corridors/walkways.
- The lighting levels are varied.
- Access to other floors/levels is via stairs and lift.

Signage

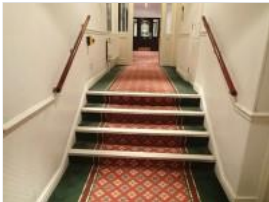
Collapse -

- Wayfinding signage is provided.
- The colour, design and typeface of signs is consistent throughout the building.

Audio

Collapse -

- This venue does play background music in public areas.
- Music is played in the bar and restaurant.
- There is not a hearing assistance system in the public areas of the building.



1



2



3



4



5

Eating and Drinking (The Priory Restaurant)

Collapse -

- The following information is for the restaurant.
- The restaurant is located on the ground floor, to the right as you enter via the hotel main entrance.
- There is step-free access to the restaurant.
- Full table service is available.
- Food and/or drinks can be ordered from the service counter.
- There is not a hearing assistance system.
- There is step-free access within the restaurant.
- There is ample room for a wheelchair user to manoeuvre.

- This area does play background music.
- The type of flooring in this area is carpet and tiles.
- No tables are permanently fixed.
- No chairs are permanently fixed.
- No chairs have armrests on both sides.
- The nearest table is approximately 4m from the entrance/opening.
- The nearest table is approximately 4m from the till/counter.
- The standard height for tables is 64cm.
- Plastic/takeaway cups are not available.
- Plastic/takeaway cutlery is not available.
- Drinking straws are available.
- There are hand held menus available.
- Menus are not available in Braille.
- Menus are not available in large print.
- Picture menus are not available.
- Menus are clearly written.
- Menus are presented in contrasting colours.
- The type of food served here is Fine Dining.
- The lighting levels are varied.
- Access to the additional seating area is via 2 medium height steps.

Comments

Collapse -

- Breakfast is served in the restaurant area and is self-service.



1



2



3



4



5



6

Eating and Drinking (The Priory Bar)

Collapse -

- The following information is for the bar.
- The bar is located on the ground floor, to the right as you enter the hotel main entrance.
- There is step-free access to the bar.
- Full table service is not available.
- Food and/or drinks are ordered from the service counter.
- Food and/or drinks can be brought to the table.
- The height of the service counter is medium height (77cm - 109cm).
- There is not a lowered section of the counter.
- There is not a hearing assistance system.
- There is step-free access within the bar.
- There is ample room for a wheelchair user to manoeuvre.
- This area does play background music.

- The type of flooring in this area is carpet.
- No tables are permanently fixed.
- No chairs are permanently fixed.
- Some chairs have armrests on both sides.
- The nearest table is approximately 2m from the entrance/opening.
- The nearest table is approximately 3m from the till/counter.
- The standard height for tables is 64cm.
- Plastic/takeaway cups are not available.
- Plastic/takeaway cutlery is not available.
- Drinking straws are available.
- There are hand held menus available.
- Menus are not available in Braille.
- Menus are not available in large print.
- Picture menus are not available.
- Menus are clearly written.
- Menus are presented in contrasting colours.
- The type of food served here is a modern bar menu.
- The lighting levels are varied.



1



2



3



4

Conference / Meeting Facilities (Gippeswick Suite)

Collapse -

- Conference/meeting facilities are available.
- The conference/meeting facilities are located on the ground floor, to the right of the reception.
- There is step-free access to the conference/meeting facilities.
- The door opening width(s) is/are 75cm+ for the room(s).
- There is not a hearing assistance system for the room(s).
- There are no chairs with armrests on both sides within the room(s).
- There is sufficient space for a wheelchair user to manoeuvre within the room(s).
- The lighting levels in the room(s) are adjustable.



1



2



3



4

Accessible Room(s) (Rooms 1 and 2)

Collapse -

Accessible Room Information

Collapse -

- The details in this section relates to the accessible room(s) with a bath.
- This type of accessible room is located on the ground floor.
- There is step-free access to this type of accessible room.
- All accessible rooms of this type have similar specifications.
- The ensuite transfer space for the accessible rooms varies from left to right.

- Guests need to open a door between the entrance and the room(s).
- The narrowest width of the corridor leading to the room surveyed was 161cm.

Bedroom Features

Collapse -

- The accessible room surveyed is located on the ground floor, in the corridor to the left of the hotel entrance.
- The accessible room surveyed at the time of the visit was Room 1.
- There is step-free access to the accessible room surveyed.
- There is Braille, tactile and pictorial signage on or near the accessible room door.
- The door is key card activated.
- The fob/card reader height is 94cm.
- The width of the door is 78cm (2ft 7in).
- There are lowered spy holes available.
- The bed type is double.
- The bed height is not adjustable.
- The height of the bed is 63cm (2ft 1in).
- The measurement between the bed base and floor is 5cm (2in).
- The bed is not moveable.
- The room does have an unobstructed minimum turning space of 150cm x 150cm next to the bed.
- The height of the desk is 69cm.
- The desk is not height adjustable.
- The desk knee recess has the recommended dimensions of 70cm (height) x 50cm (depth).
- The room surveyed had a desk chair with armrests and a sofa.
- Wardrobes have been adapted to allow use from a seated position.
- Light switches are not between 75cm and 120cm (4ft) from floor level.
- Electric sockets are between 40cm and 100cm (4ft) from floor level.
- The window control type(s) for the room is a/are standard lever(s).
- There is an emergency alarm in the room.
- The emergency pull cord alarm is tied up and out of reach (higher than 10cm (4") from floor).
- There is not a flashing fire alarm beacon within the room.
- The type of flooring is carpet.

Ensuite Facilities

Collapse -

- The ensuite door opens by sliding.
- The door weight is heavy.
- The door has no lock.
- The width of the door to the ensuite is 78cm (2ft 7in).
- The dimensions of the ensuite are 150cm x 175cm (4ft 11in x 5ft 9in).
- The ensuite does not have an unobstructed minimum turning space of 150cm x 150cm in front of the toilet seat.
- The ensuite has not got a non-slip floor.
- There is an emergency alarm within the ensuite.
- The emergency pull cord alarm is tied up and out of reach (higher than 10cm (4") from floor).
- There is not a flashing fire alarm beacon within the ensuite.
- Disposal facilities are available.
- There is a/are pedal waste paper bin disposal units.
- There is a mirror.
- The mirror is not placed at a lower level or at an angle for ease of use.
- There is a shelf immediately next to or behind the toilet.
- The shelf is not between 90cm and 100cm.
- There is a wash basin.
- The wash basin cannot be reached from seated on the toilet.
- The wash basin is placed higher than 74cm (2ft 5in).
- The height of the wash basin is 87cm.

- There are no vertical wall-mounted grab rails at the wash basin.
- The tap type is lever.
- There is a mixer tap.
- There is a soap dispenser.
- The soap dispenser cannot be reached from seated on the toilet.
- The height of the soap dispenser is 120cm.

Toilet Details

[Collapse -](#)

- The height of the toilet seat above floor level is 41cm (1ft 4in).
- The toilet has a lid.
- There is a lateral transfer space.
- As you face the toilet pan the transfer space is on the right.
- The lateral transfer space is 76cm (2ft 6in).
- There is a flush on the transfer side.
- There is not a spatula type lever flush.
- There is a dropdown rail on the transfer side.
- There is a/are wall-mounted grab rail(s) available.
- As you face the toilet, the wall mounted grab rails are on the left.
- There is not a vertical wall-mounted grab rail on the transfer side.
- There is a horizontal wall-mounted grab rail on the opposite side of the seat to the transfer space.
- There is a toilet roll holder.
- The toilet roll holder can be reached from seated on the toilet.
- The toilet roll holder is not placed higher than 100cm (3ft 3in).
- The height of the toilet roll holder is 65cm (2ft 2in).

Bath Details

[Collapse -](#)

- The ensuite has a bath.
- The height of the side of the bath from floor level is 54cm (1ft 9in).
- The tap type is twist/turn.
- There is a mixer tap.
- There is a shower over the bath.
- The shower head is height adjustable.
- The shower control type is twist/turn.
- There is a/are wall-mounted grab rail(s) available for the bath.

Colour Contrast and Lighting

[Collapse -](#)

- The colour contrast between the external hotel room door and wall is fair.
- The colour contrast between the internal hotel room door and wall is poor.
- The colour contrast between the hotel room walls and floor is good.
- The colour contrast between the external ensuite door and wall is poor.
- The colour contrast between the internal ensuite door and wall is poor.
- The colour contrast between the ensuite walls and floor is poor.
- The colour contrast between the drop down rail(s) and wall is fair.
- The colour contrast between the wall-mounted grab rail(s) and wall is fair.
- The colour contrast between the bath wall-mounted grab rails and wall is poor.
- The toilet seat colour contrast is poor.
- The lighting levels in the room are low.
- The lighting levels in the ensuite are good.



1



2



3



4



5



6

Standard Room(s) (Room 8)

Collapse -

Bedroom Features

Collapse -

- The room surveyed is located on the ground floor, to the left as you enter the hotel entrance.
- The room surveyed at the time of the visit was Room 8.
- There is step-free access to the room surveyed.
- There is numbered signage on or near the room door.
- The width of the door is 77cm (2ft 6in).
- The bed type is double.
- The height of the bed is 65cm (2ft 2in).
- The measurement between the bed base and floor is 5cm (2in).
- Light switches are not within 120cm (3ft 11in) from floor level.
- There is not an emergency alarm in the room.
- There is not a flashing fire alarm beacon within the room.
- The type of facilities within the ensuite include; a toilet, a wash basin and a shower.
- The ensuite door opens inwards.
- The width of the door to the ensuite is 71cm (2ft 4in).
- There is not an emergency alarm within the ensuite.
- There is not a flashing fire alarm beacon within the ensuite.
- The tap type is lever.
- There is a mixer tap.

Colour Contrast and Lighting

Collapse -

- The colour contrast between the external hotel room door and wall is fair.
- The colour contrast between the internal hotel room door and wall is poor.
- The colour contrast between the hotel room walls and floor is good.
- The colour contrast between the external ensuite door and wall is poor.
- The colour contrast between the internal ensuite door and wall is poor.
- The colour contrast between the walls and floor in the ensuite is poor.
- The lighting levels in the room are adjustable.
- The lighting levels in the ensuite are good.

Comments

Collapse -

- There is a deep step to access the shower.



1



2



3



4



5



6

Standard Room(s) (Executive Rooms 3 and 33)

Collapse -

Bedroom Features

Collapse -

- The room surveyed is located on the ground floor, to the left as you enter from the hotel entrance.
- The room surveyed at the time of the visit was Room 3.
- There is step-free access to the room surveyed.
- There is tactile, written and numbered signage on or near the room door.
- The width of the door is 78cm (2ft 7in).
- The bed type is double.
- The height of the bed is 65cm (2ft 2in).
- The measurement between the bed base and floor is 5cm (2in).
- Light switches are not within 120cm (3ft 11in) from floor level.
- There is not an emergency alarm in the room.
- There is not a flashing fire alarm beacon within the room.
- The type of facilities within the ensuite include; a toilet, a wash basin and a bath.
- The ensuite door opens inwards.
- The width of the door to the ensuite is 72cm (2ft 4in).
- There is not an emergency alarm within the ensuite.
- There is not a flashing fire alarm beacon within the ensuite.
- The tap type is lever.
- There is a mixer tap.

Colour Contrast and Lighting

Collapse -

- The colour contrast between the external hotel room door and wall is fair.
- The colour contrast between the internal hotel room door and wall is fair.
- The colour contrast between the hotel room walls and floor is good.
- The colour contrast between the external ensuite door and wall is poor.
- The colour contrast between the internal ensuite door and wall is poor.
- The colour contrast between the walls and floor in the ensuite is poor.
- The lighting levels in the room are adjustable.
- The lighting levels in the ensuite are good.



1



2



3



4



5



6



7



8

Other Floors

Collapse -

Stairs

Collapse -

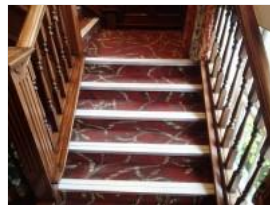
- Stairs can be used to access other floors.
- The stairs are for public use.
- The stairs are located to the left of reception.
- The stairs are approximately 7m from the hotel main entrance.
- The stairs are clearly visible from the entrance.
- The floors which are accessible by stairs are G and 1.
- There are 15+ steps between floors.
- The height of the step(s) is/are between the recommended 15cm and 18cm.
- The going of the step(s) is/are between the recommended 30cm and 45cm.
- The steps are clearly marked.
- There is a/are handrail(s) at the step(s).
- The steps have a handrail on both sides.
- Handrails are at the recommended height (90cm-100cm).
- Handrails do not cover the flight of stairs throughout its length.
- Handrails are easy to grip.
- Handrails do not extend horizontally beyond the first and last steps.
- There is a landing.
- Clear signs indicating the facilities on each floor are provided on landings.
- The lighting levels at the steps are varied.



1



2



3



4

Lift

Collapse -

- There is a lift for public use.
- The lift is located to the right of reception.
- Signs indicating the location of the lift are clearly visible from the entrance.
- The lift is approximately 11m (12yd 1in) from the hotel main entrance.

- The lift is a standard lift.
- A member of staff does not need to be notified for use of the lift.
- The floors which are accessible by this lift are G and 1.
- There are manual, heavy, single doors to access the lift lobby on all floors.
- Clear signs indicating the facilities on each floor are not provided on lift lobby landings.
- There is a clear level manoeuvring space of 150cm x 150cm in front of the lift.
- Lift doors do contrast visually with lift lobby walls.
- The external controls for the lift are within 90cm - 110cm from the floor.
- The colour contrast between the external lift controls and the control plate is poor.
- The colour contrast between the external lift control plate and the wall is poor.
- The clear door width is 80cm (2ft 7in).
- The dimensions of the lift are 112cm x 142cm (3ft 8in x 4ft 8in).
- There are no separate entry and exit doors in the lift.
- There is a mirror to aid reversing out of the lift.
- There is a list of floor services available within the lift.
- The lift does have a visual floor indicator.
- The lift does not have an audible announcer.
- The controls for the lift are within 90cm - 120cm from the floor.
- There is not a hearing loop system.
- The lift does not have Braille markings.
- The lift does not have tactile markings.
- The lighting levels in the lift are good.



1



2

Conference / Meeting Facilities (Martlesham Boardroom)

Collapse -

- Conference/meeting facilities are available.
- The conference/meeting facilities are located on the first floor, to the left as you exit the lift.
- There is step-free access to the conference/meeting facilities, via lift.
- The door opening width(s) is/are 75cm+ for the room(s).
- There is not a hearing assistance system for the room(s).
- There are no chairs with armrests on both sides within the room(s).
- There is sufficient space for a wheelchair user to manoeuvre within the room(s).
- The lighting levels in the room(s) are good.



1



2

Fitness Suite (Mini Gym)

Collapse -

Access to Fitness Suite

Collapse -

- The fitness suite is located on the first floor, to the left as you exit the lift.

- The fitness suite is 21m (22yd 2ft) from the lift.
- There is not level access to the fitness suite.
- There are doors into the fitness suite.
- The doors open away from you (push).
- The doors are single.
- The doors are heavy.
- The opening is 76cm (2ft 6in) wide.

Fitness Suite (General)

Collapse -

- Staff receive no training in assisting disabled people.
- A portable hearing loop is not available for induction.
- There is not clear manoeuvring space between equipment.
- There is level access to all of the equipment.

Comments

Collapse -

- The mini gym is kept locked.
- Access is available by contacting reception.



1



2



3



4

Accessible Toilet(s) (Ground Floor)

Collapse -

- There is an/are accessible toilet(s) for public use.

Location and Access

Collapse -

- The accessible toilet surveyed is not for the sole use of disabled people.
- This accessible toilet is located on the ground floor, to the right of reception.
- This accessible toilet is approximately 17m (18yd 1ft) from the hotel main entrance.
- There is step-free access to the accessible toilet.

Features and Dimensions

Collapse -

- This is a shared toilet.
- A key is not required for the accessible toilet.
- There is Braille, tactile and pictorial signage on or near the toilet door.
- The door opens by sliding.
- The door is heavy.
- The door is locked by a sliding bolt.
- The width of the accessible toilet door is 75cm (2ft 6in).
- The dimensions of the accessible toilet are 188cm x 195cm (6ft 2in x 6ft 5in).
- The accessible toilet does not have an unobstructed minimum turning space of 150cm x 150cm.
- The toilet has not got a non-slip floor.
- The height of the light switch/pull cord is 96cm from floor level.
- There is a lateral transfer space.

- As you face the toilet pan the transfer space is on the right.
- The lateral transfer space is 101cm (3ft 4in).
- There is a flush on the transfer side.
- There is not a spatula type lever flush.
- There is a dropdown rail on the transfer side.
- There is an emergency alarm.
- The emergency pull cord alarm is fully functional.
- There is not a flashing fire alarm beacon within the toilet.
- Disposal facilities are available in the toilet.
- There is a/are female sanitary and waste paper pedal bin disposal units.
- There is a/are coat hook(s).
- The height of the coat hook is 117cm from the floor.

Position of Fixtures

Collapse -

- There is a/are wall-mounted grab rail(s) available.
- As you face the toilet the wall-mounted grab rail(s) is/are on both sides.
- There is a vertical wall-mounted grab rail on the transfer side.
- There is a horizontal wall-mounted grab rail on the opposite side of the seat to the transfer space.
- There is a mirror.
- The mirror is not placed at a lower level or at an angle for ease of use.
- There is not a shelf next to the toilet.
- The toilet has a lid.
- The height of the toilet seat above floor level is 43cm (1ft 5in).
- There is a toilet roll holder.
- The toilet roll holder can be reached from seated on the toilet.
- The toilet roll holder is not placed higher than 100cm (3ft 3in).
- There is a wash basin.
- The wash basin cannot be reached from seated on the toilet.
- The wash basin is placed higher than 74cm (2ft 5in).
- The height of the wash basin is 75cm (2ft 6in).
- There is a vertical wall-mounted grab rail on the left hand side of the wash basin.
- The wash basin tap type is lever.
- There is not a mixer tap.
- There is a soap dispenser.
- The soap dispenser cannot be reached from seated on the toilet.
- The height of the soap dispenser is 93cm.
- There is a towel dispenser.
- The towel dispenser cannot be reached from seated on the toilet.
- The towel dispenser is not placed higher than 100cm (3ft 3in).
- There is not a hand dryer.

Colour Contrast and Lighting

Collapse -

- The contrast between the external door and wall is good.
- The contrast between the internal door and wall is good.
- The contrast between the dropdown rail(s) and wall is good.
- The contrast between the wall-mounted grab rail(s) and wall is good.
- The toilet seat colour contrast is poor.
- The contrast between the walls and floor is good.
- The lighting levels are good.

Baby Changing Facilities

Collapse -

- Baby changing facilities are located within the accessible toilet.
- The baby change table is not set against the wall, permanently fixed at 75cm from the floor.
- The baby change table is not height adjustable.
- The height of the baby change table once extended is 83cm (2ft 9in).



1



2



3

Accessible Toilet(s) (First Floor)

Collapse -

- There is an/are accessible toilet(s) for public use.

Location and Access

Collapse -

- The accessible toilet surveyed is not for the sole use of disabled people.
- This accessible toilet is located on the first floor, to the left as you exit the lift.
- This accessible toilet is approximately 12m (13yd 4in) from the lift.
- There is step-free access to the accessible toilet, via lift.

Features and Dimensions

Collapse -

- This is a shared toilet.
- A key is not required for the accessible toilet.
- There is Braille, tactile and pictorial signage on or near the toilet door.
- The door opens outwards.
- The door is heavy.
- The door is locked by a sliding bolt.
- The width of the accessible toilet door is 87cm (2ft 10in).
- The dimensions of the accessible toilet are 147cm x 197cm (4ft 10in x 6ft 6in).
- The accessible toilet does not have an unobstructed minimum turning space of 150cm x 150cm.
- The toilet has not got a non-slip floor.
- There is a lateral transfer space.
- As you face the toilet pan the transfer space is on the right.
- The lateral transfer space is 65cm (2ft 2in).
- There is a flush on the transfer side.
- There is not a spatula type lever flush.
- There is a dropdown rail on the transfer side.
- There is an emergency alarm.
- The emergency pull cord alarm is fully functional.
- There is a flashing fire alarm beacon within the toilet.
- Disposal facilities are available in the toilet.
- There is a/are female sanitary and waste paper pedal bin disposal units.
- There is a/are coat hook(s).
- The height of the coat hook is 118cm from the floor.

Position of Fixtures

Collapse -

- There is a/are wall-mounted grab rail(s) available.

- As you face the toilet the wall-mounted grab rail(s) is/are on both sides.
- There is a vertical wall-mounted grab rail on the transfer side.
- There is a horizontal wall-mounted grab rail on the opposite side of the seat to the transfer space.
- There is a mirror.
- The mirror is not placed at a lower level or at an angle for ease of use.
- There is not a shelf next to the toilet.
- The toilet has a lid.
- The height of the toilet seat above floor level is 46cm (1ft 6in).
- There is a toilet roll holder.
- The toilet roll holder can be reached from seated on the toilet.
- The toilet roll holder is not placed higher than 100cm (3ft 3in).
- There is a wash basin.
- The wash basin cannot be reached from seated on the toilet.
- The wash basin is not placed higher than 74cm (2ft 5in).
- There is a vertical wall-mounted grab rail on the left hand side of the wash basin.
- The wash basin tap type is lever.
- There is not a mixer tap.
- There is a soap dispenser.
- The soap dispenser cannot be reached from seated on the toilet.
- The height of the soap dispenser is 93cm.
- There is a towel dispenser.
- The towel dispenser cannot be reached from seated on the toilet.
- The towel dispenser is not placed higher than 100cm (3ft 3in).
- The height of the towel dispenser is 78cm (2ft 7in).
- There is not a hand dryer.

Colour Contrast and Lighting

Collapse -

- The contrast between the external door and wall is good.
- The contrast between the internal door and wall is good.
- The contrast between the dropdown rail(s) and wall is good.
- The contrast between the wall-mounted grab rail(s) and wall is good.
- The toilet seat colour contrast is poor.
- The contrast between the walls and floor is good.
- The lighting levels are good.



1



2

Standard Toilet(s) (Ground Floor)

Collapse -

- Standard toilet facilities are available.

Access to Standard Female Toilet(s)

Collapse -

- The female toilet facilities that were surveyed are located on the ground floor, to the right of reception.
- The female toilet(s) is/are approximately 20m (21yd 2ft) from the hotel main entrance.
- There is step-free access to the female toilet(s).
- There is Braille, tactile and pictorial signage on or near the toilet door.

- An ambulant toilet with wall-mounted grab rails is not available.
- The wash basin tap type is lever.
- There is not a flashing fire alarm beacon within the toilets.
- Lighting levels are good.
- There is a/are similar standard toilet(s) available.

Access to Standard Male Toilet(s)

Collapse -

- The male toilet facilities that were surveyed are located on the ground floor, to the right of reception.
- The male toilet(s) is/are approximately 18m (19yd 2ft) from the hotel main entrance.
- There is step-free access to the male toilet(s).
- There is Braille, tactile and pictorial signage on or near the toilet door.
- An ambulant toilet with wall-mounted grab rails is not available.
- The wash basin tap type is lever.
- There is not a flashing fire alarm beacon within the toilets.
- Lighting levels are good.
- There is a/are similar standard toilet(s) available.



1



2



3



4

Standard Toilet(s) (First Floor)

Collapse -

- Standard toilet facilities are available.

Access to Standard Female Toilet(s)

Collapse -

- The female toilet facilities that were surveyed are located on the first floor, to the left as you exit the lift.
- The female toilet(s) is/are approximately 11m (12yd 1in) from the lift.
- There is step-free access to the female toilet(s), via lift.
- There is Braille, tactile and pictorial signage on or near the toilet door.
- An ambulant toilet with wall-mounted grab rails is not available.
- The wash basin tap type is lever.
- There is not a flashing fire alarm beacon within the toilets.
- Lighting levels are good.
- There is a/are similar standard toilet(s) available.

Access to Standard Male Toilet(s)

Collapse -

- The male toilet facilities that were surveyed are located on the first floor, to the left as you exit the lift.
- The male toilet(s) is/are approximately 13m (14yd 8in) from the lift.
- There is step-free access to the male toilet(s), via lift.
- There is Braille, tactile and pictorial signage on or near the toilet door.
- An ambulant toilet with wall-mounted grab rails is not available.
- The wash basin tap type is lever.
- There is not a flashing fire alarm beacon within the toilets.
- Lighting levels are good.
- There is a/are similar standard toilet(s) available.